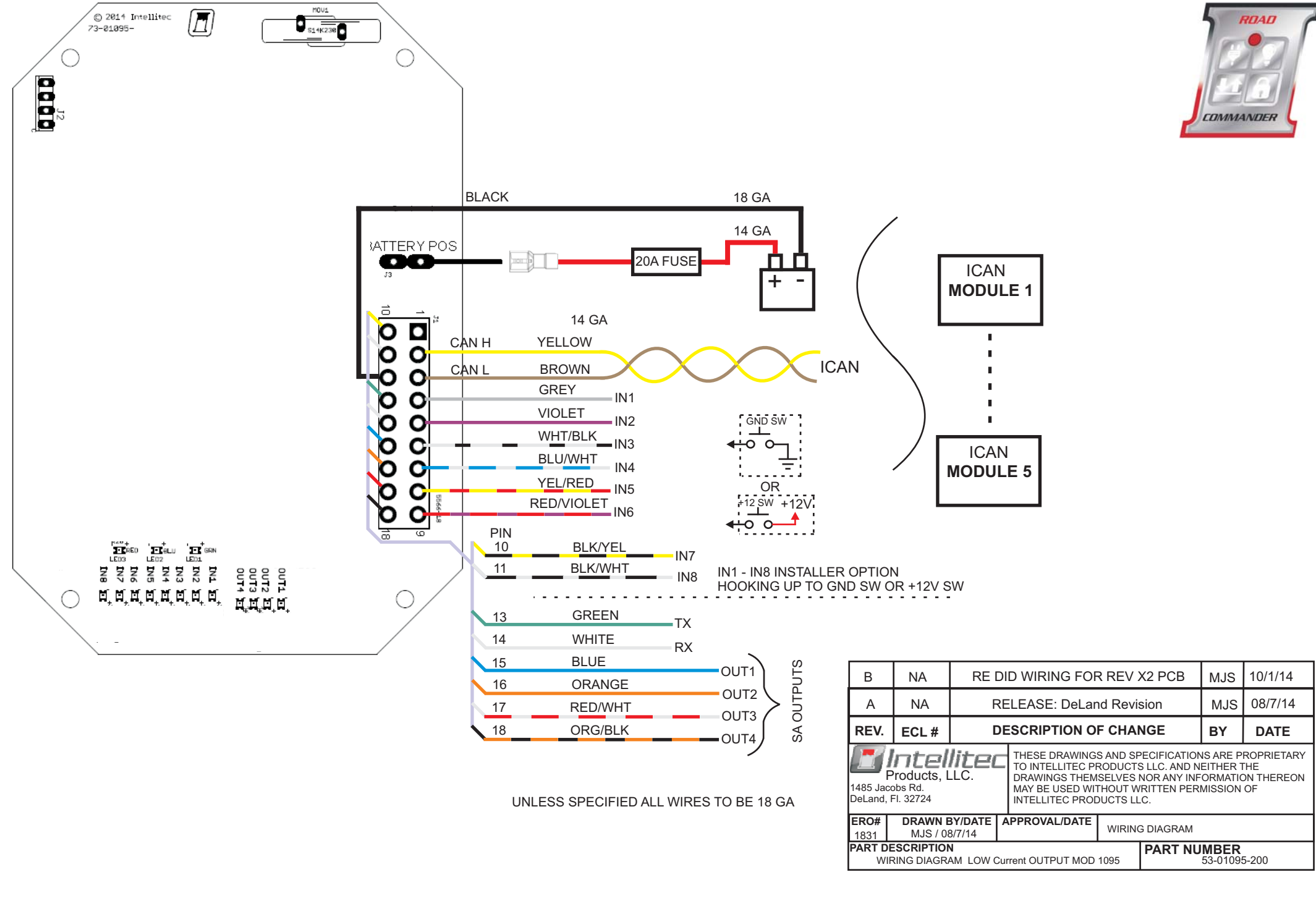




THESE INSTRUCTIONS ARE ONLY TO BE USED AS A GUIDE. IT IS THE INSTALLERS RESPONSIBILITY TO VALIDATE FOR EACH INSTALLATION.
NEITHER INTELLITEC PRODUCTS LLC, OR INTELLITEC MV Ltd CAN BE HELD RESPONSIBLE FOR VEHICLE VARIATIONS

© 2014 Intellitec
73-01095-



B	NA	RE DID WIRING FOR REV X2 PCB	MJS	10/1/14
A	NA	RELEASE: DeLand Revision	MJS	08/7/14
REV.	ECL #	DESCRIPTION OF CHANGE	BY	DATE
 Intellitec Products, LLC. 1485 Jacobs Rd. DeLand, FL 32724		THESE DRAWINGS AND SPECIFICATIONS ARE PROPRIETARY TO INTELLITEC PRODUCTS LLC. AND NEITHER THE DRAWINGS THEMSELVES NOR ANY INFORMATION THEREON MAY BE USED WITHOUT WRITTEN PERMISSION OF INTELLITEC PRODUCTS LLC.		
ERO#	DRAWN BY/DATE	APPROVAL/DATE	WIRING DIAGRAM	
1831	MJS / 08/7/14			
PART DESCRIPTION			PART NUMBER	
WIRING DIAGRAM LOW Current OUTPUT MOD 1095			53-01095-200	